

CMH 315W KIT SPECIFICATION



→ General product information

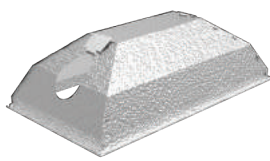
Product Name	Lucius ReCom CMH 315W Kit
Application	Horticultural Industry. Ideal for the entire plants cycle.
Inclusion	Lucius Recom CMH 315W Ballast - Recom CMH Bracket - Focal & or Broad Reflector SE - Indoor Sun Lamp
Light Kit PPF Efficacy	1.57 PPF/W
Maximum PPF	550 $\mu\text{mol/s}$
Light Kit Weight	USA: 4.2Kg / 8.8 lbs AU/NZ, UK, EU, Asia: 3.4Kg / 7.5 lbs
Operating Temperature	-20 to +40°C / -4° to z104°F
Shipping and Storage Temperature	-40 to +70°C / -40° to 158°F
Operating Humidity	0% to 90% non-condensing
Waterproof and dustproof	IP20

→ Indoor Sun CMH 315W






Colour Temperature (CT)	3200K	4200K
Application	Entire plant life cycle + superior flowering	Entire plant life cycle + superior vegetative growth
Lamp Voltage	110	110
Max PPF	550 $\mu\text{mol/s}$	535 $\mu\text{mol/s}$
Lamp PPF Efficacy	1.72 PPF/W	1.66 PPF/W
Lumen	34500	32000
CRI	87%	97%
Base / operating position	PGZ18 / Horizontal (H) $\pm 45^\circ$	PGZ18 / Horizontal (H) $\pm 45^\circ$
Dimension (L x Dia)	193x38mm	193x38mm
Manufacturing Code	CMH315/H/T38/PGZ18/3.2K/PRO	CMH315/H/T38/PGZ18/4.2K/PRO

→ Fixture



REFLECTOR	Type	FOCAL SE	BROAD SE
	Material	Stucco Aluminium Miro® 4	
	Reflectivity	95%	
	Application	Best choice for the professional gardeners Focal light concentration Highest average affective light Increased light penetration deep into plant canopy, ideal for high ceiling	Low ceiling preferred option Hanging close to the plant canopy Low bay / Wide spread Vented reflector reduce heat over plant
	Compatible Lamps	CMH 315W HPS SE 250W / 400W / 600W MH 400W / 600W	CMH 315W HPS SE 250W / 400W / 600W MH 400W / 600W
	Manufacturing Code	LF-F	LF-B

RECOM SE BRACKET	Lamp Holder	PGZ18
	Plug	  AU/NZS 3112 US BAASR  UK & EU IEC 60320 C-14
	Cable	USA: 6 in , 3x16AWG AU/NZ, UK, EU, Asia: 0.15m
	Manufacturing Code	AU : LRCF-CA US : LRCF-CS UK : LRCF-CK EU : LRCF-CE

CMH 315W KIT SPECIFICATION



→ Lucius ReCom CMH 315W Ballast

INPUT		OUTPUT		
Nominal Voltage	USA: 120/208/240V AU/NZ, UK, EU, Asia: 220/230/240V	Output Frequency	> 120Hz Square Wave	
Voltage Range	USA: 110~265V AU/NZ, UK, EU, Asia: 215~265V	Voltage Range	<120V	
Max Current	USA: 3A AU/NZ, UK, EU, Asia: 1.5A	Max Ignition	5KV	
Inrush Current / Input Frequency	Inrush < 15A/0.8mSec 50/60 Hz	Ignition Interval	1-5-5-5 minute *After 5 ignition failed attempts to turn the lamp on, the ballast will be shut down and the LED will alarm error. See LED Status . To reset the ballast error, disconnect and reconnect the power.	
Efficiency	93%	Plug	 AU/NZS 3112 US BAASR UK & EU IEC 60320 C-13	
Power Factor	≥ 0.97	Cable	USA: 8in, 3×16AWG AU/NZ, UK, EU, Asia: 0.2m, 3×1.5mm ² *All output cables are equipped with the magnet ring to meet EMC requirements.	
THDv	<10%	Control Knob	OFF - 315W - LMC	
Plug	 AU/NZS 4417 US NEMA 5-15 UK BS1363A EU DIN 49441	Controller (Optional)	Able to connect to the Lucius Light Management Controller. Dimming, timing, temperature setting, simulating sunset and sunrise. See Lucius Light Management Controller instruction manual for more details.	
Cable	USA: 8ft, 3×16AWG AU/NZ, UK, EU, Asia: 2.4m, 3×1.5mm ² *All input cables are equipped with the magnet ring to meet EMC requirements.	Ballast Dimension LxWxH	USA: 286x117x82.5mm AU/NZ, UK, EU, Asia : 246x117x82.5mm	
PROTECTION	Over-voltage	Protection mode is activated when the voltage is greater than 275V.	Ballast Weight	USA: 3.2Kg / 7 lbs AU/NZ, UK, EU, Asia: 2.4Kg / 5.3 lbs
	Under-voltage	240V: Under-voltage between 175 ~ 195V leads to 90% output power drop. Protection mode is activated when the voltage is less than 175V. 120V: Under-voltage between 95 ~ 110V leads to 90% output power drop. Protection mode is activated when the voltage is less than 95V.	Compatible Lamp	CMH 315W
	Short Circuit	When the output is shorted, the ballast will be shut down & the LED will alarm error for short circuit protection. See LED Status . To reset the ballast error, disconnect and reconnect the power.	Certification	
	Open Circuit	When the output is disconnected for any reason during operation, the ballast will shut down & the LED will alarm error for open circuit protection. See LED Status . To reset the ballast error, disconnect and reconnect the power.	Regulatory Standards	IEC 61347-1:2007+A1:2010 (also as used AS/NZS 61347.1:2002) IEC 61347-2-12:2005+A1:2011 EN 55015(AS/NZS CISPR 15:2011) IEC 61000
	Over-temperature	When ambient temperature (Ta) is more than 40°C, the ballast will shut down & the LED will alarm error for high temperature protection. To reset the ballast error, keep the ambient temperature in the allowed operating range, disconnect & reconnect the power.	Manufacturing Code	AU/NZ: LRCE-315241-C1CHA US: LRCE-31512241-C1C5S UK: LRCE-315231-C1CHK EU: LRCE-315231-C1CHE
	Lamp END of Life / Rectification	The ballast can protect against end of lamp life rectification.		
	Time Delay	All ballasts have built in ignition delay (0-6S randomly) to reduce the starting current.		
	LED Status	ON: Power is applied and the ballast is operating. (LED illuminated) OFF: Power is not available at the input. (LED off) Blinking: Protection Mode.		